

A-ONE Smart



Composition and Features

> Composition



> Features



Accurate analysis and result

- Pore, sebum (U-Zone, T-Zone), wrinkle, pigmentation, In-Depth analysis of Moisture, Elasticity, Skin Tone, Skin temperature
- Pores in colors according to the size
- Ratio of Normal / Suppurative sebum of U-Zone, T-Zone
- Comparison and analysis of the results
 - ▶ Comparison with average value of age group of customer and ideal skin condition



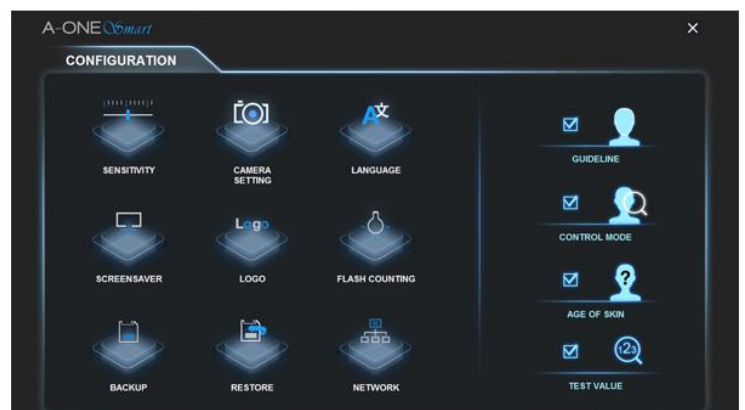
Various functions

- Result report printed in 1 page
- Recognition of skin surface with 3D viewer
- Recommendation of suitable products to customer by registering products
- Shopping cart, purchase list
- Customer management
 - ▶ Manage history records
 - ▶ Manage purchase records
 - ▶ Print analysis photo, Shopping cart page



Additional functions for customer's convenience

- Share data between connected networks
- Multi languages provided
- Recognition of skin age
- Back up and restoration of data



Handy and Portable Skin/Scalp analysis machine

A-ONE Tab

with Wi-Fi



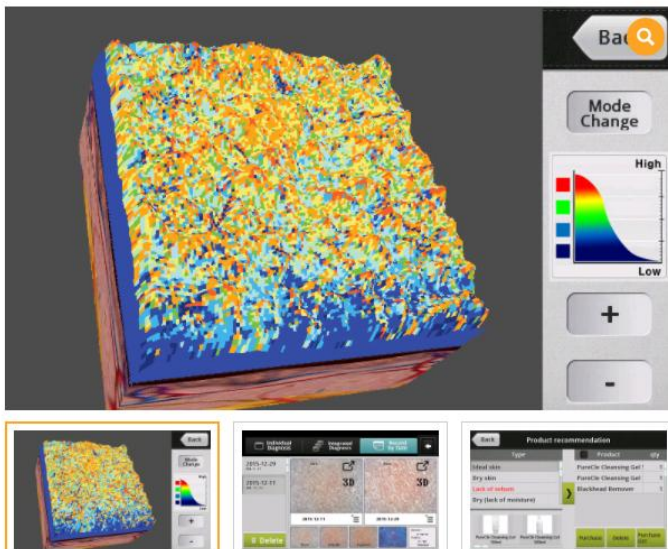
Small but Outstanding features

- Independent use without connecting to PC
- Fast and automatic analysis
- Compare and analyze the measurement value.
 - ▶ Compare to the value of customer's age group.
- Select Individual / Full analysis for user's purpose.
- analysis of skin and scalp (Select Skin, Skin/Scalp, Scalp)
 - ▶ Skin: Sebum, Pore, Wrinkle, Pigmentation, Moisture, Elasticity
 - ▶ Pore: Scalp type, Sebum quantity, Density of hair, Hair Loss, Pore condition, Hair damage, Hair thickness



User-friendly System

- Portable and compact size
 - Easy to use with Touch-screen
 - Various sample photos
 - Mirroring function/PC synchronization
 - ▶ Connect to USB or Wi-Fi
 - ▶ Mirroring on PC, Mobile or Tablet PC
- (Download the application 'A-ONE Tab Mirror' on Android, iOS)



Various additional functions

- Recognition of skin surface with 3D viewer
- Comparison of Before & After treatment with Reviewing function
- Recommendation of suitable products to customer by registering products
- Search Customer's Analysis history and Purchase list
- Data backup through USB or SD card

⚙️ Config



Product Update

Exit

Registration

Search

Simple Diagnosis



2015.07.27.1.eng(UI:2015.08.31)

